

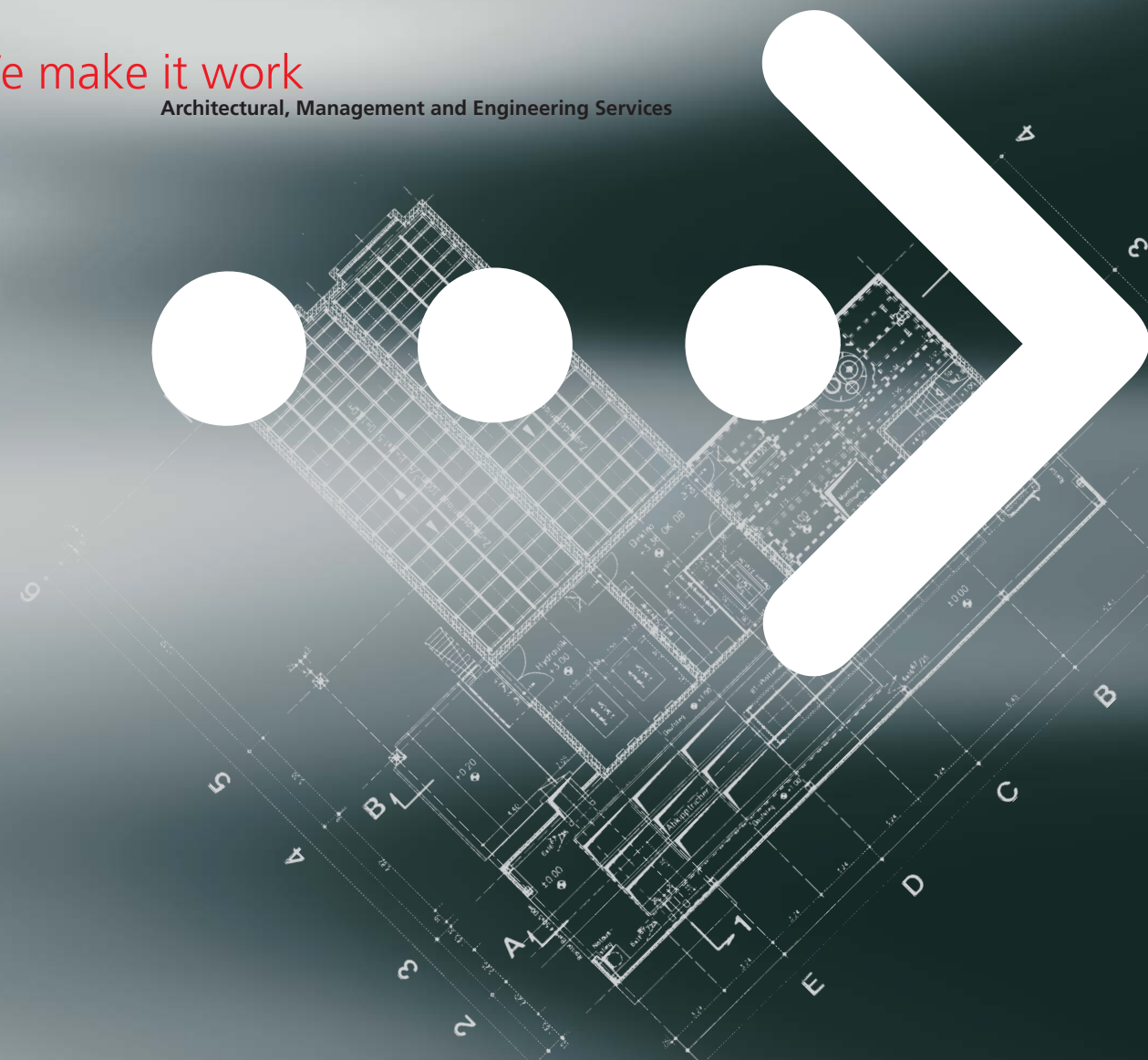
Scherr+Klimke Aktiengesellschaft  
P.O. Box 1164  
89001 Ulm  
Germany  
Telephone: +49(0)731 9225-0  
Telefax: +49(0)731 9225-200  
info@scherr-klimke.de  
www.scherr-klimke.de

**Projects in**

- Algeria
- Austria
- Belgium
- Brazil
- China
- Germany
- France
- Indonesia
- México
- Oman
- Poland
- Portugal
- Qatar
- Russia
- Switzerland
- Slovakia
- Spain
- Sudan
- Turkey
- Vietnam

We make it work

Architectural, Management and Engineering Services



## Our Philosophy

Scherr+Klimke is an experienced, innovative and technologically leading company that provides planning, engineering, consulting and project management services. Scherr+Klimke

- designs and implements specially customized solutions
- employs excellent staff who is well-qualified and committed
- supports the planning, engineering, consulting and project management work using most modern IT systems
- is capable of handling projects in an efficient and effective way
- cooperates with competent partners
- is financially sound and independent of supplier interests.

All of the company's staff members represent Scherr+Klimke. Commitment, above-average performance and continuing technical and personal training are therefore a matter of course to our staff.



Scherr+Klimke has been involved in planning and consultancy for more than 40 years. The company's portfolio of services currently includes the following areas:

- General Planning/Master Planning
- Architecture
- Civil Engineering/Structural Engineering
- Logistics/Plant Engineering
- Project Management



Consulting

Engineering

Design

Project Management

# We make it work

# Constructive Solutions

## Civil Engineering

Civil engineering is doubtlessly one of our focuses. Especially in the cement industry, the company has developed, planned and implemented important and innovative projects. Our particular strength lies in the comprehension and penetration of all aspects of the sphere "plant engineering/building" and in the optimisation and harmonisation of function, design and economy. To us, civil engineering does not mean "devoted" acceptance but discussion of the technical conditions. Neither does it mean to accept the primacy of mechanical engineering – it means to search for a balanced overall optimum for a plant. Evidence of this planning work can be found in Germany, Austria and France in the form of clinker plants, furnace systems, silo plants and mixing systems.

Another main focus in this planning sector are parking facilities – both underground and multi-storey car parks. Experience from a multitude of projects going back more than 20 years means that we are experts with regard to functional analysis, economical static/construction and attention to detail.

## Plant engineering

Plant engineering means designing a functional system in which all relevant areas of the plant are coordinated and adjusted in order to find the best possible combination of function, design, economy and aesthetics for the overall project without losing track of adherence to deadlines and cost minimisation.

Innovative solutions play an important part. They are developed by us, starting with theoretical aspects and are then fleshed out with know-how and experience from previous projects. Knowledge of optimum plant engineering interaction, experience from different sectors of industry and reliable knowledge of details are the decisive factors for successful plant planning.

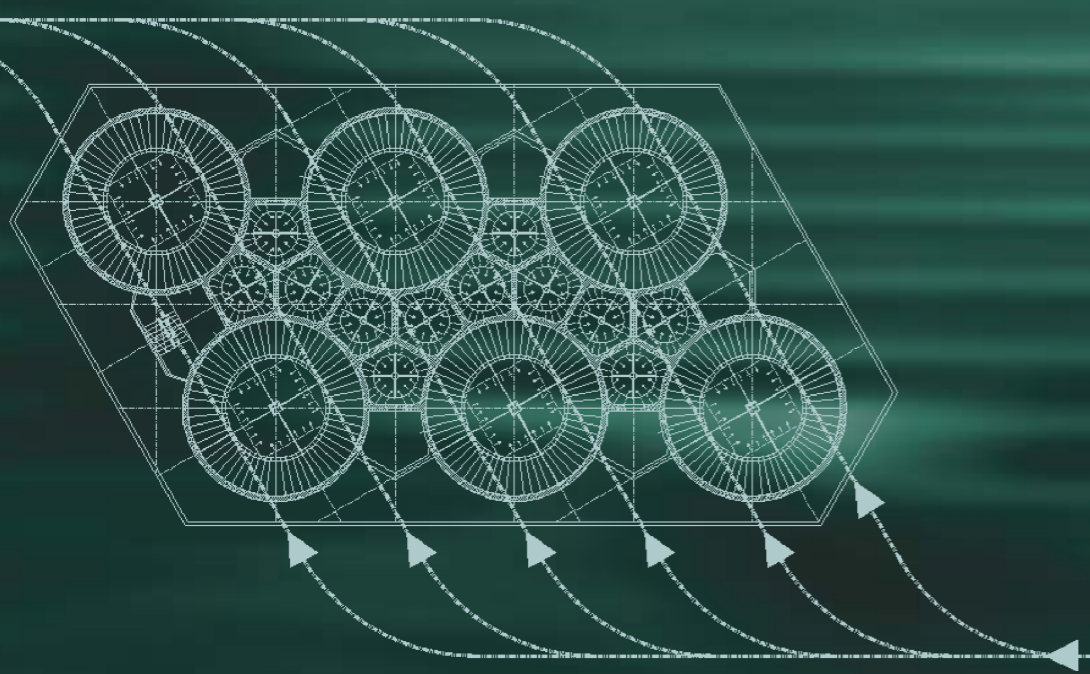
We have had many years of experience in the field of plant engineering in the following industrial sectors:

- Cement manufacture
- Power generation
- Waste disposal and
- Automotive

The scope and depth of the planning that we provide for such projects includes interdisciplinary general planning which starts with basic research, initial layout and design planning. This is followed by approval planning, plant and construction engineering and the associated supporting structure planning including technical equipment of a building and site supervision.



# Civil Engineering



# Functionality and Design – Not Conflicting Aims

## Architecture

You can argue about architecture – but not about functionality. “Form follows function” was one of the main Bauhaus statements in the 1920’s. In those days, the function of a product, system or plant was the source of the essential design specifications, and new construction methods and materials were being tried out. This guiding principle is still just as valid as it was 80 years ago, even if a change of values has taken place and new technology has now arrived.

Industrial architecture is therefore primarily about functionality, but it is just as committed to the people working in the buildings and the corresponding environment.

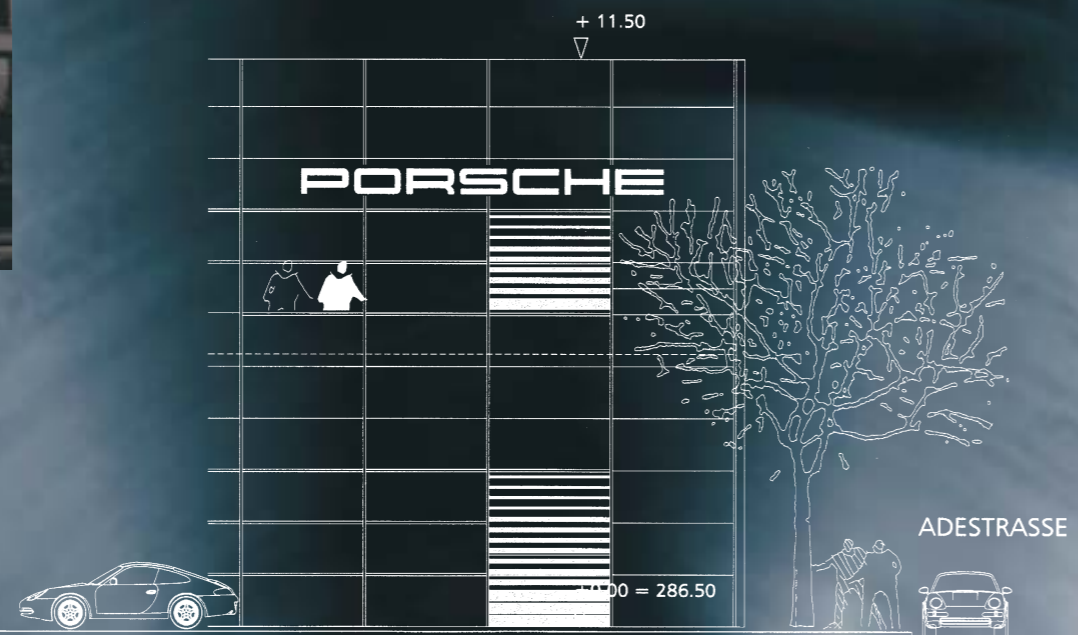
Everything changes, including the language of architecture. The reference system is still decisive. However, no one design solution is the same as another – if the reference system remains the same. Our architecture cannot deny that it thrives on the integration of design, construction and technical building equipment. Why should it? It is clearly evident from our buildings that we are looking for a harmonious combination of function, aesthetics and technology – and can show that we are able to find it.

## Structural Engineering

A supporting structure is made by joining independent parts to make an interdependent system. This structure can be very simple or very complex. However, what is it that makes the structure so simple or so complex? A structure whose simplicity makes it very attractive can be extremely difficult to control, and where is this plainer to see than in nature?

However, the solution is not simply to copy under the illusion that nature provides blueprints for engineering which need only to be realised. We have built steel domes resembling crooked spiders’ webs and towers the model for which can be found in bundles of reeds.

In other words, there is a wide range of ideas whose applicability must be examined and calculated. They can provide decisive impulses for the structural design, but this must take place in accordance with engineering aspects.



# Building Engineering



## Successful Partnerships

General planning normally includes the provision of the technical equipment, i.e. heating, ventilation, sanitary and electrical equipment of a building.

Our sister company **Conplaning**, Ingenieurbüro für Gebäudetechnik, Energietechnik, Umwelttechnik GmbH is usually our partner in these matters, since qualification and proximity speak in favour of this relationship.

Conplaning has been operating as a reliable and competent partner for customers in the municipal and industrial sectors for more than 40 years. Conplaning's maxim is to seek and implement innovative and sustainable solutions from an ecological and economic standpoint.

Its over 35 engineers, technicians and CAD draughtsmen allow Conplaning to provide all aspects of interdisciplinary technical equipment of a building.

Special problems such as foundation analyses, surveying, zoning as well as regional planning, soil and rock mechanics, environmental planning and laboratory technology are dealt with in collaboration with **Kling Consult**, Design and Engineering Consultancy for Civil Engineering, Institute for Geotechnical Engineering.

Kling Consult as independent engineering designers (staff over 100 people) see themselves as overall planners assuming the responsibility for projects of any size - from sharply-defined regional projects to international large-scale construction sites. Kling Consult accompany every single measure in any special field required from the very first idea to the final acceptance, with utmost determination.

Technically demanding and economically reasonable consulting work using all modern communication media available is a basic requirement for that.



## We made it work

### Automotive Industry

AUDI AG, Ingolstadt, Curitiba Brazil  
BMW Group, München  
Busak + Shamban GmbH, Stuttgart  
DaimlerChrysler AG, Stuttgart  
Dethleffs GmbH, Isny  
DM Nacional S.A.,  
Ciudad de México, México  
IVECO GmbH, Ulm  
Dr. Ing. h.c. F. Porsche AG, Stuttgart  
VDO Adolf Schindling AG, Schwalbach  
Volkswagen AG, Wolfsburg,  
Pamplona, Spain  
Puebla, México  
WEIDMANN Plastics Technology AG,  
Rapperswil Switzerland  
ZF Friedrichshafen AG, Friedrichshafen

### Cement Industry

Vicat Group, Paris, France  
HeidelbergCement AG, Heidelberg  
Holcim Group, Zürich, Switzerland  
Lafarge Group, Paris, France  
SCHWENK Unternehmensgruppe, Ulm

### Metalworking Industry

Buderus Aktiengesellschaft, Wetzlar  
FAG Kugelfischer Georg Schäfer  
Aktiengesellschaft, Schweinfurt  
Müller Weingarten AG, Weingarten  
Wieland-Werke AG, Ulm

### Electrical Industry

BDT Büro- und Datentechnik GmbH  
& Co. KG, Rottweil  
BSH Bosch und Siemens Hausgeräte  
GmbH, München  
SEL Alcatel AG, Stuttgart

### Food and Beverage Industry

Edelweiß-Käsewerk, Kempten  
Brauerei Gold Ochsen GmbH, Ulm  
Grünau Illertissen GmbH, Illertissen  
König-Brauerei GmbH, Duisburg  
Seeberger KG, Ulm

### Logistics Industry

Grieshaber AG, Transport + Logistik,  
Weingarten  
Honold GmbH & Co. KG, Internationale  
Spedition, Neu-Ulm

### Pharmaceutical Industry

Boehringer Ingelheim Pharma GmbH  
& Co. KG, Biberach  
Merckle GmbH, Ulm  
Pharmaplan International GmbH, Oberursel  
ratiopharm GmbH, Ulm

Extracts from our reference list

# Partners